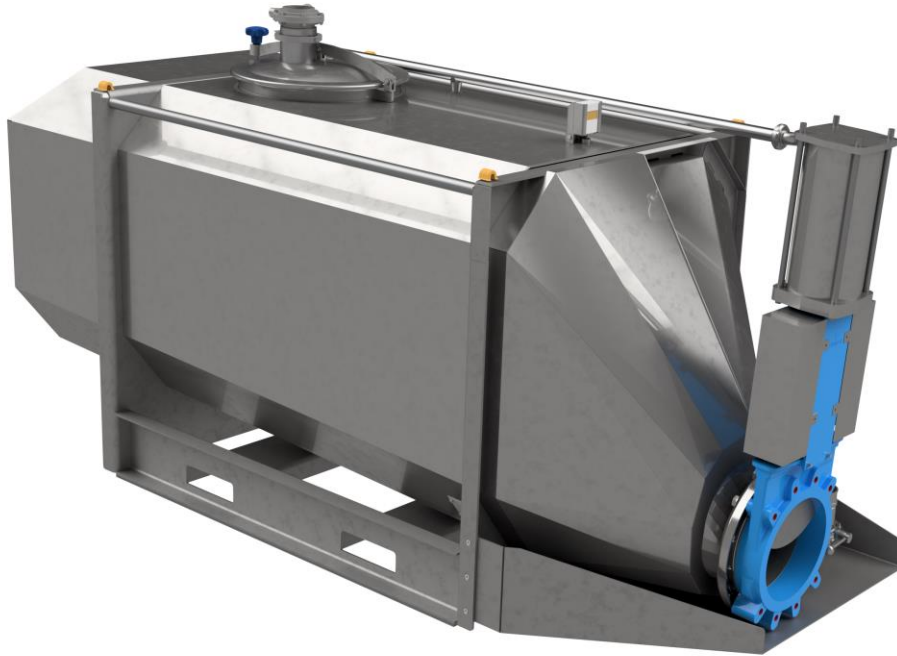




BLEEDING AND COOLING TANKS

Isolated bleeding and cooling tanks with circulation system and temperature logging.
Tank sizes from 2 m³ to 40 m³. Made in stainless steel 316L





Specially designed tanks provide a good bleeding-out environment, and keep the fish chilled until they arrive at the processing plant.

The whole tank is insulated with 50 mm insulation plates and mantled with 0.9 mm stainless steel sheeting.

Temperature sensor with logging functions, so the cooling process and the part it plays in the value chain is always under control.

The stainless-steel pump keeps water and ice circulating, so there is no temperature separation in the tank. The pump circulates the water around the salmon's gills, which ensures good bleeding-out.

The DN350 valve has an air cylinder that opens the valve quickly when emptying, so that the water and ice do not run out before the salmon.

Connection point on hatch for insertion of washing nozzle. The tank is designed to be easy to wash, with little use of chemicals.

The tank has an angled bottom, so it drains easily at the lowest point.

Can be lifted easily by crane or truck.

PROPERTIES

- Tank made of stainless-steel 316L
- DN350 valve in stainless-steel
- Temperature logger
- Circulation pump in stainless steel.
- Insulated with 50 mm insulation plates

ADVANTAGES

- Ensures good control of bleeding-out and chilling process
- Can be delivered in sizes from 2 m³ to 40 m³ (bigger if needed)

VALUE

- Keeps fish at premium quality