

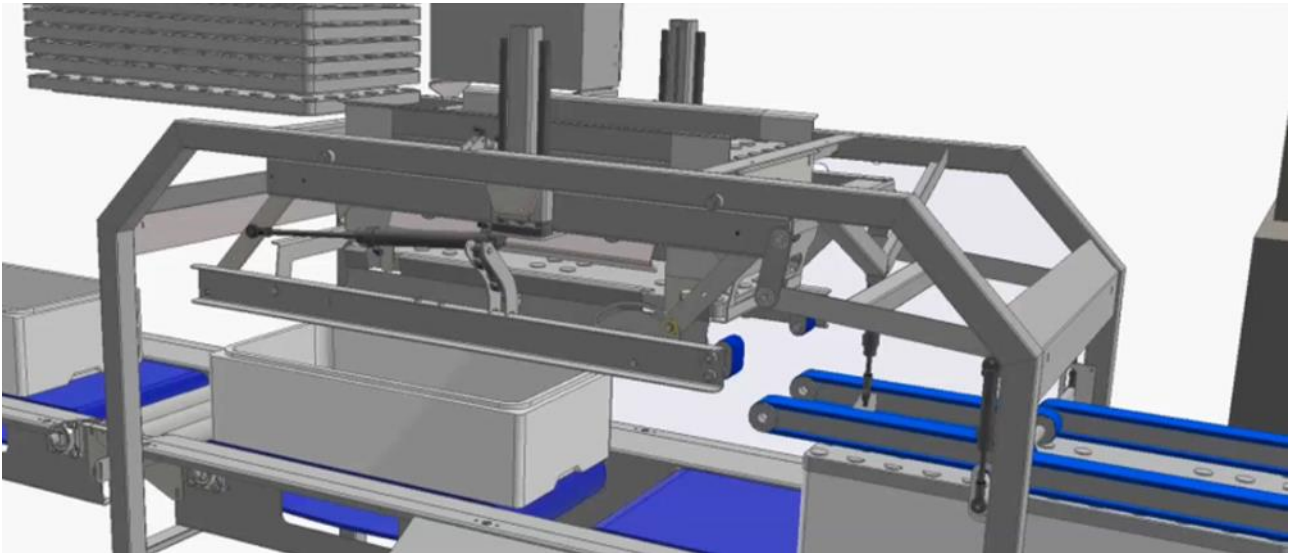


LID APPLICATOR for EPS boxes

High capacity lid applicator for EPS boxes.
Handles 2 types of lids at the same time.



LID APPLICATOR for EPS boxes



MMC FIRST PROCESS high speed Lid Applicator, is designed for EPS standard boxes and EPS aircraft boxes. The Lid Applicator is of open design, to allow easy access for operation, maintenance and cleaning.

Lids are applied automatically as part of a continuous process, where the lid is placed on the box while the box is being transported through the Lid Applicator. The lid is applied to the box in a pendulum motion using pneumatic cylinders. While the lid is engaging on the top of the box, a pneumatic lid depressor simultaneously holds the lid down until the straps are in place.

The Lid Applicator has two separate conveyors, to ensure smooth and continuous flow throughout the process. There are integration modules, each with 3 rollers, at the start of the first conveyor and at the end of the second conveyor.

The entire construction is designed to ensure hygienic operation. The Lid Applicator is easily integrated into existing production lines in conjunction with ice dispensers, ice levelling systems and strapping systems. If lids have previously been applied manually, a label scanner is needed to allow operators to control whether a standard lid, or an aircraft lid, is to be placed on the relevant box.

PROPERTIES

- Ease of operation and fault detection using operator-friendly touch screen.
- See-through design for easier fault detection.
- Open design for ease of maintenance and cleaning.

ADVANTAGES

- Up to 20 boxes/min, depending on optimized production flow.
- Can operate with 2 different lids at the same time.
- Box goes through without stopping, depending on production flow in front of machine

VALUE

- Fewer repetitive operations and possible strain injuries.
- Steady packaging flow through the factory.
- No packaging in production area (lift to be added from second floor)